

Vetina CS3

Veterinary HD Rigid Endoscopy System

Medical Quality , Veterinary-Specific



**For more information please contact:
Endoscopy Support Services, Inc.
3 Fallsview Lane Brewster, NY 10509
845-277-1700 * www.endoscopy.com**



Vetina CS3

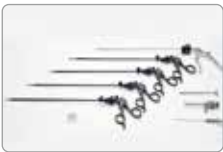
Mindray Animal Medical are committed to offering human standard equipment and provides an animal-specific endo-scope system with 1080P Full HD imaging by meeting demands of vets.



Built-in USB Recording



Four Insufflation Modes Available



Endoscopes & Consumables for Different Procedures



Full Optical Bonding Medical Monitor



3-chip CMOS Sensor
2X Optical Zoom



Image Presets for Four Different Procedures



Medical Quality

Vetina camera head

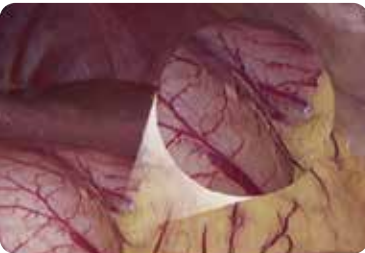
suitable for veterinary practice

- Exclusive design to help keep balance
Lightweight, reduces surgeon fatigue during long procedures
- IPX7 waterproof rating
Submersible for cleaning & disinfection

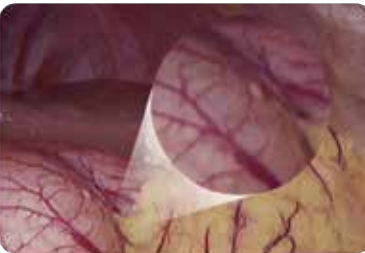


Optical Zoom Ensures Less Image Artifact

- Focal length: 14-30mm, 2X optical zoom without losing quality



| 2X optical zoom |



| 2X electronic zoom |

3-Chip CMOS Powerful Image Processing Device

Compared with CCD, CMOS has better light sensitivity and less noise. The sensors process the three primary colors separately, presenting more realistic colors and clearer organization details, while realizing zooming and focusing simultaneously.



CMOS performance



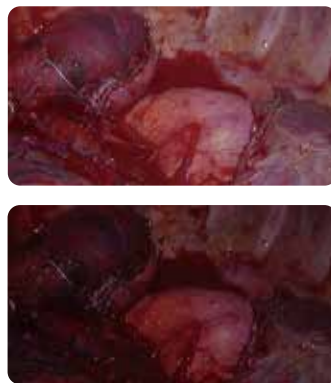
CCD performance



Medical Quality

Powerful image post-processing technology

- Brightness level adjusts automatically for immediate identification of hemorrhage
- Effectively reduces motion blur
- Image presets for four different procedures



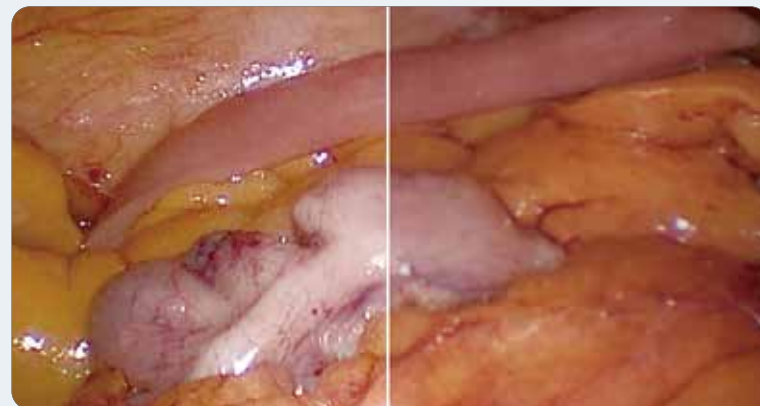
27" Full Optical Bonding Medical Monitor



- Medical standard
- Full sealed: allowing wipe disinfection, prevent moisture getting into the display
- LOCA bonding: Better transparency, anti-glare, 178 degree viewing angle

Optical Bonding Panel Technology

Suppress the reflection and retraction of light



LOCA bonding panel

Normal panel



Veterinary-Specific

Veterinary Insufflator Vetina GS3

- Mindray's exclusive algorithm provides stable pressure
- Preset values specific for veterinary medicine
- Four insufflation modes available



7" Touch screen

Low-cost After Sales Service

Maintenance-free LED Light Source Vetina LS3

- Equivalent to 300W xenon light source
- Compatible with third-party light cable
- Maintenance-free
- Service life of 10,000 surgeons



20000h
10000 surgeons



6000K
LED light source

Veterinary-Specific

Built-in USB Recording

- FHD photo capture and video recording
- Convenient sharing and clear projection display on academic events
- Easy recording with just one click
- Meets advertising demands of private animal hospitals



Anti-Fogging HD Endoscope



*Autoclaved

*

25-150mm

extended
depth of field

Special anti-fog

technique

Effectively

avoids
lens distortion

5mm,3mm

Suitable for
veterinary applications

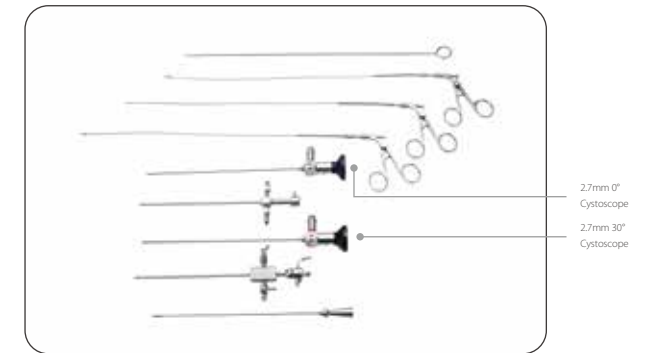
*Marked as LP5430M Endoscope parameters
LP530 Endoscope's depth of field is 10-100mm

Veterinary-Specific

Endoscopes & Consumables For Different Procedures



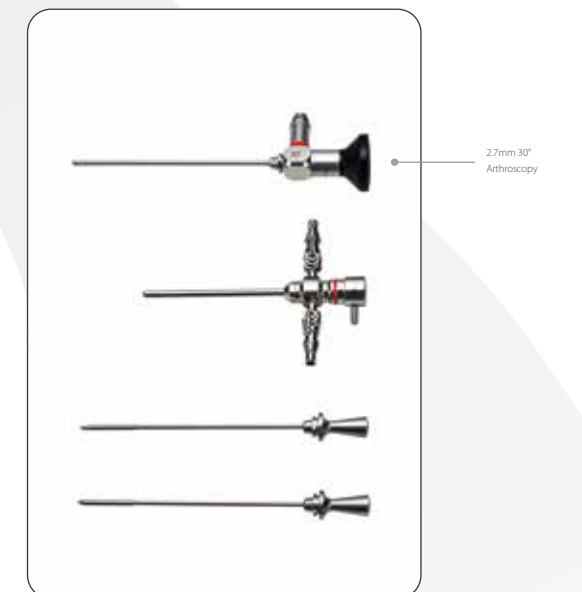
Laparoscope



Cystoscope



Otoscope and
Rhino-Laryngoscope



Arthroscopy