



UNIVERSAL IMAGING
SEE THE DIFFERENCE®



SB9

***Never Compromise
Performance for Portability***

Equine

Companion Animal

Bovine

Exotic

Anesthesiology

Maximum Efficiency

The SB9 combines high-resolution imaging with unmatched ease of use and connectivity. Whether you need it on the road or on a cart, the SB9 offers everything you want in a go everywhere do anything system. Combined with Universal's dedication to CE, remote access to live one on one training, and clinical sonography support the SB9 is an excellent long term solution guaranteeing success.

Fast boot-up

15 inch HD LED monitor

Auto brightness adjustment to indoor/outdoor environment to save battery life

SSD for speed and durability

Wi-Fi compatible

Less heat and less noise

Ultra-slim, ultra-lightweight



Small Outside, **Huge Inside**

SB9 Software

The SB9 system is a complete multi department ultrasound platform. Utilizing Veterinary specific presents and measurements packages. The system includes all options, everything from Enhanced needle visualization to advanced cardiac function and built in ECG. You find the SB9 not only images extremely well but is very simple to use.

Comprehensive measurement packages

Auto IMT, Semi-automatic Simpson measurement, PISA, M-mode, OB, MSK, and more.

CW Doppler with built-in

Single button optimization technology for image consistency

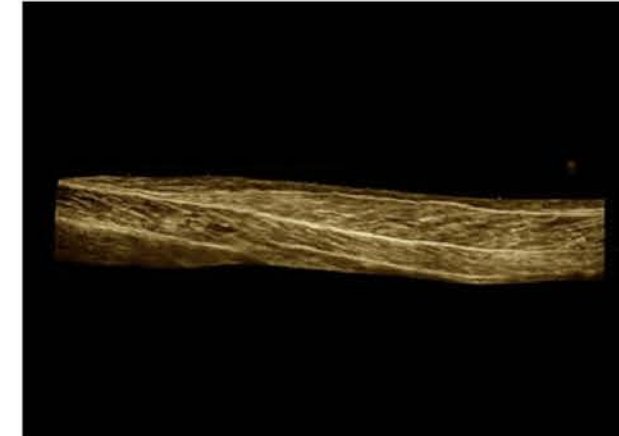
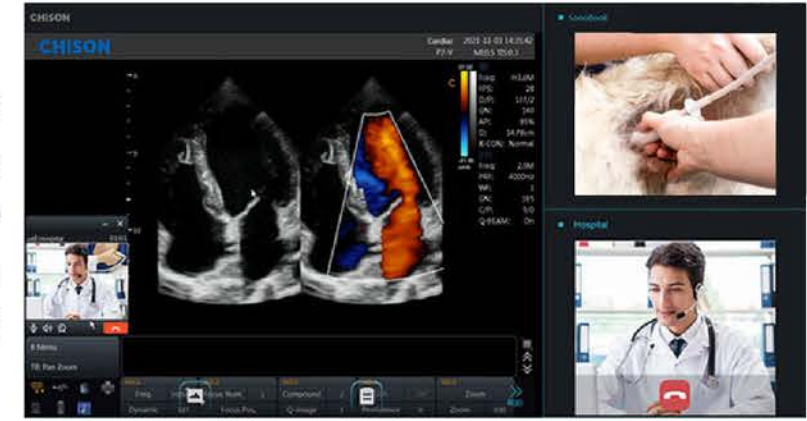
Multi-zoom for enhancing tiny structures with full screen view



Super Needle
Enhance the needle displaying in image, without distortion.

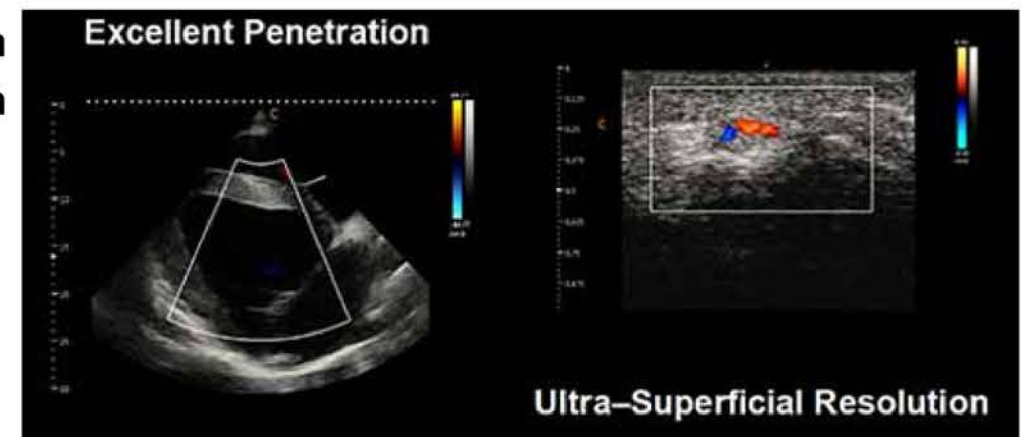
Ultra Remote

Adds real time sonographer assistance the SB9



Real time panoramic
Enhance your visualization of large structures with real time panoramic views.

30+ cm penetration



23.0 MHz

Transducers



LINEAR:

4.0-15.0 MHz

- Small parts
- Musculoskeletal
- High res. abdominal



LINEAR (WITH FHI):

7.0-18.0 MHz

- Small parts
- Musculoskeletal
- High res. abdominal



HIGH FREQUENCY LINEAR:

11.0-23.0 MHz

- Musculoskeletal
- Digits
- Ocular



LINEAR RECTAL:

6.0-10.0 MHz, 70mm

- Abdominal
- Reproduction
- Musculoskeletal



CONVEX:

2.0-6.8 MHz

- Deep penetration
- Equine abdominal
- Small animal



MICROCONVEX:

4.0-12.0 MHz

- Abdominal
- Cardiac
- Wide FOV



PHASED ARRAY:

1.5-5.3 MHz

- Equine cardiac
- Deep penetration
- Canine



PHASED ARRAY:

2.0-8.0 MHz

- Cardiac
- Small animal
- Canine/feline

To learn more and how
Universal can help with all
your diagnostic imaging needs

Visit Universalimaginginc.com

Call 800-842-0607