

EMERGENCIES THAT SHOULD RECEIVE VETERINARY CARE

- Severe vomiting or diarrhea – (more than 2 episodes in a 24-hour period)
- Refusal to eat or drink for 24 hours or more
- Difficulty breathing or frequent coughing/gagging
- Noticeable depression/lethargy
- Any acute trauma
- Coughing up blood, or blood in urine
- Severe bleeding
- Fractured bones, severe lameness or inability to move leg(s)
- Inability to urinate or pass feces (stool), or obvious pain associated with urinating or passing stool
- Injuries to your pet’s eye(s)
- Seizures, staggering, and/or collapse
- Open wounds or lacerations
- You suspect or know your pet has eaten something poisonous

ANY concern about your pet’s health warrants, at minimum, a call to your veterinarian.

CT SCAN

- CT Scan allows assessment of the body that is otherwise difficult, if not impossible to evaluate with traditional radiographic measures, making it possible to diagnose diseases EARLIER and more ACCURATELY!
- CT images give in-depth information about the bones, joints, spine, nasal cavity, chest and abdomen.
- Evaluation of intrathoracic masses (lung or mediastinal tumors)
- Intra-abdominal tumors (tumors of the liver, adrenal glands, urogenital tracts)
- Evaluation of angular limb deformities



MRI

- High-field MRI generates faster scan times and higher quality images
- Allows more accurate diagnoses of nervous system abnormalities
- Enables more specific treatment plans for the underlying condition



ER TRANSPORT



We offer transport to and from our hospital, based on availability.

WE ARE ALWAYS HERE FOR YOU



24/7, 365 DAYS A YEAR!

Mount Laurel Animal Hospital has proudly served the community for over 40 years. Our team of over 50 highly-skilled doctors and more than 300 staff members is dedicated to the best possible 24 hour emergency and specialty veterinary care for your companion pet. Be sure to visit [mlahvet.com](http://mlahvet.com) to view our emergency service wait time before your arrival.



SCAN TO ADD US AS YOUR PET EMERGENCY CONTACT



856-234-7626

220 Mount Laurel Road  
Mount Laurel, NJ 08054  
[mlahvet.com](http://mlahvet.com)



856-234-7626



24 HOUR EMERGENCY & SPECIALTY CARE



# EMERGENCY & SPECIALTY CARE

Mount Laurel Animal Hospital has proudly served the community for over 40 years. Our team of over 50 highly-skilled doctors and more than 300 staff members is dedicated to the best possible 24 hour emergency and specialty veterinary care for your companion pet. Be sure to visit [mlahvet.com](http://mlahvet.com) to view our emergency service wait time before your arrival.

## EMERGENCY & CRITICAL CARE

- **Management of Serious Medical Conditions** including shock, DKA, acute liver injury, renal failure, chronic metabolic illnesses, and immune-mediated disorders
- **Management of Minor and Major Trauma** including bite wounds, motor vehicle trauma, and head injuries
- **Treatment of Complex Emergencies** including heat stroke, drowning, refractory seizures, unremitting vomiting, intoxications, burns, and smoke inhalation
- **Hemodynamic Monitoring** including blood pressure, continuous ECG monitoring, CVP, oximetry and capnography
- **Stabilization of Critically Ill Patients** including post-operative monitoring and care
- **Full In-House Laboratory** including blood gas and coagulation testing
- **Advanced Fluid and Electrolyte Therapy**
- **Pressor Therapy and Management of Arrhythmias** including post-resuscitation monitoring and support
- **Transfusion Therapy** including whole blood and component therapy (plasma, red cells, cryoprecipitate, albumin)
- **Oxygen Supplementation and Airway Management**
- **Peritoneal, Pleural and Pericardial Drainage**
- **Enteral Nutrition**
- **Multimodal Pain Management** including continuous infusions and epidural analgesia
- **Imaging** including in-house ultrasound (AFAST, TFAST), digital radiography, and computed tomography

We are fortunate to have our emergency staff working side-by-side with our specialty care doctors. This allows medical treatment to continue stress-free as all of our services are housed under one roof.



## ANESTHESIOLOGY

We offer advanced monitoring, blood transfusions, an extensive pharmacy, and alternative anesthetic techniques, great for:

- Neonatal and Geriatric pets
- Pets with existing heart, kidney and liver disease, metabolic disorders
- Critically ill pets / pets who have recently sustained a trauma
- Pain assessment/management services for inpatients, chronic pain management



## BEHAVIORAL MEDICINE

- **Assessment and treatment plan development** for any behavioral concerns
- **Head start and pre-surgical appointments**
- **Behavior modification plans** if your dog is fearful, anxious, or aggressive
  - Improve your pet's response to being handled
  - Calmness during vet visits
  - Be comfortable with:
    - Nail Trims, Bathing, Grooming
    - Administering medications
    - Putting on a leash or collar/harness



## AVIAN & EXOTIC MEDICINE

- 6 day a week appointments- wellness, sick evaluations and second opinions
- Ability to consult with emergency doctors for emergency care of exotic pets
- Routine and advanced medical and surgical procedures, including small mammal dentistry
- Advanced diagnostics- Endoscopy, CT scans, MRI scans
- Specialized equipment and cages for each species

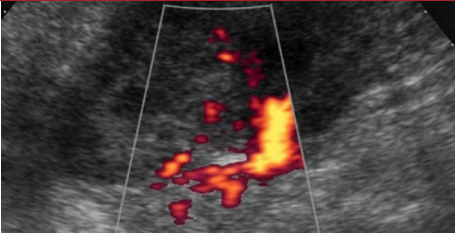
## CARDIOLOGY

- Diagnostic Workups
- Electrocardiogram
- Case Consultation
- Echocardiogram



## INTERNAL MEDICINE

- Internal Medicine Consultation
- Metabolic, Endocrine and Gastroenteric Disorders
- Abdominal Ultrasound
- Diagnostic Workups
- Endoscopy



## ONCOLOGY

- Cancer Diagnosis and Staging
- Chemotherapy
- Palliative Care
- Comprehensive review of all treatment options



## OPHTHALMOLOGY

- Medical Treatment of Eye Ailments
- Ophthalmic Diagnostics
- Ocular Surgery
- Diagnosis of Ocular Conditions
- Cataract Surgery



## SURGERY

- Advanced Wound Care
- Soft Tissue Surgery
- Head/Neck Surgery
- Fracture & Ligament Repair
- Joint Stabilization
  - Patella Luxation Repair
  - TPLO and Tightrope ACL Repair
- Arthroscopy
  - Osteochondritis Dissecans
  - Meniscal Tears
  - Fragmented Medial Coronoid Process
- Laparoscopic (minimally invasive) Spay
- Liver Biopsy and Gastropexy
- Orthotic and Prosthetic Devices
- Abdominal and Thoracic Surgery
- Oncologic Surgery/Mass Removal

