

# Experience what thousands of **EVIS EXERA III** customers already know

Incorporating advanced technology, the 190-series system empowers you to improve efficiencies and outcomes when compared to the 180-series system.

- Approximately **56% improvement** in resolving power
- About **30% greater magnification** for the HQ190 vs H180 endoscopes
- Up to **twice the viewable distance** in the lumen with improved NBI
- **20% reduction** in cecal intubation time



## Featured advancements from the 160- to 180- to 190-series systems

EVIS EXERA Series	160 Series	180 Series	190 Series
Universal Platform			
Variable Stiffness			
ScopeGuide			
HDTV			
NBI			
170-degree Field of View			
Pre-freeze			
Dual Focus			
Passive Bending			
High Force Transmission			
Waterproof One-touch Connector			
Ultra-slim Colonoscope			
Digital Endoscope Technology			
1080p and 1080i Display			
Portable Memory Storage			
One-step White Balance			

Not available
  Partial
  Limited
  Available
  Advanced

Olympus is a registered trademark of Olympus Corporation, Olympus America Inc., and/or their affiliates.  
©2016 Olympus America Inc. All rights reserved. Printed in USA  
OAGI116TRI21213

**OLYMPUS**

**OLYMPUS AMERICA INC.**

3500 Corporate Parkway, P.O. Box 610, Center Valley, PA 18034

**OLYMPUS**

Your Vision, Our Future

## EVIS EXERA III

Practical innovation proven  
to enhance efficiency.

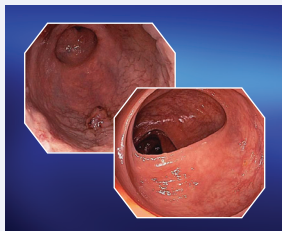


# 190-Series System: Advanced Technology

## Improved Visualization

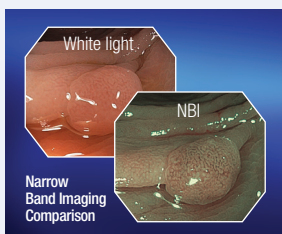
### HQ Image Quality

Identify fine structures with high visual acuity thanks to significantly improved resolving power.



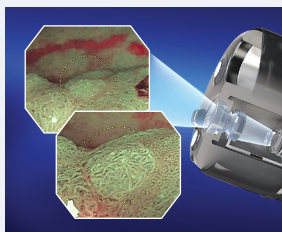
### Brighter NBI™

See twice the viewable distance inside the lumen with improved color, vessel and surface pattern visualization.



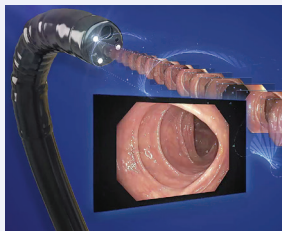
### Dual Focus

Easily toggle between normal viewing and ultra-close examination of the mucosa with just the touch of a button.



### Pre-Freeze

Avoid wasted time and the inconvenience of blurry images with this advanced image capture technology.



### ADR

Multiple studies have demonstrated Adenoma Detection Rates of 50% or more with Olympus 190-series colonoscopes.\*



\*Data on file

## Improved Handling

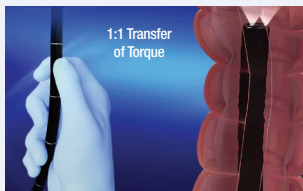
### Responsive Insertion Technology (RIT)

Exclusive to the 190-series colonoscopes, RIT improves ease of insertion while offering precise control.



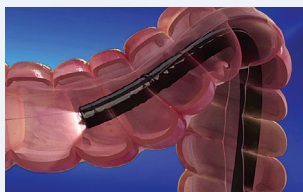
### Passive Bending

Potentially improve patient comfort and reduce risk of perforation with smooth passage through acute flexures.



### High Force Transmission

Experience improved ergonomics and precise control with significantly less force.\*



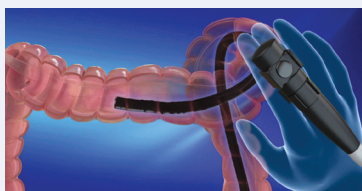
### Variable Stiffness

Adjust the stiffness of the insertion tube in real time during the procedure to match each patient's anatomy.

## Improved Workflow

### ScopeGuide

Gain substantial efficiencies thanks to magnetic imaging capabilities built into CF and PCF 190-series colonoscopes.



### One-touch Connector

Eliminate the need for a separate cap and expensive endoscope cable with an advanced waterproof reprocessing cap.



### RFID

Track 190-series colonoscopes from procedure through reprocessing via convenient, built-in technology.

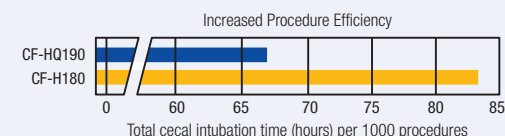


## Improved Efficiencies

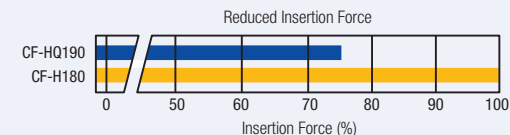
### 190-series Colonoscopes

Offer faster cecal intubation times, reduced fatigue and improved ergonomics.

**REDUCE PROCEDURE TIME:** CF-Type 190 procedure times have shown a 20% reduction in median cecal intubation time



**IMPROVED PATIENT COMFORT:** CF-Type 190 requires 25% less insertion force than the previous generation



**IMPROVED OPERATOR CONTROL:** CF-Type 190 transmits 21° more torque than the previous generation

